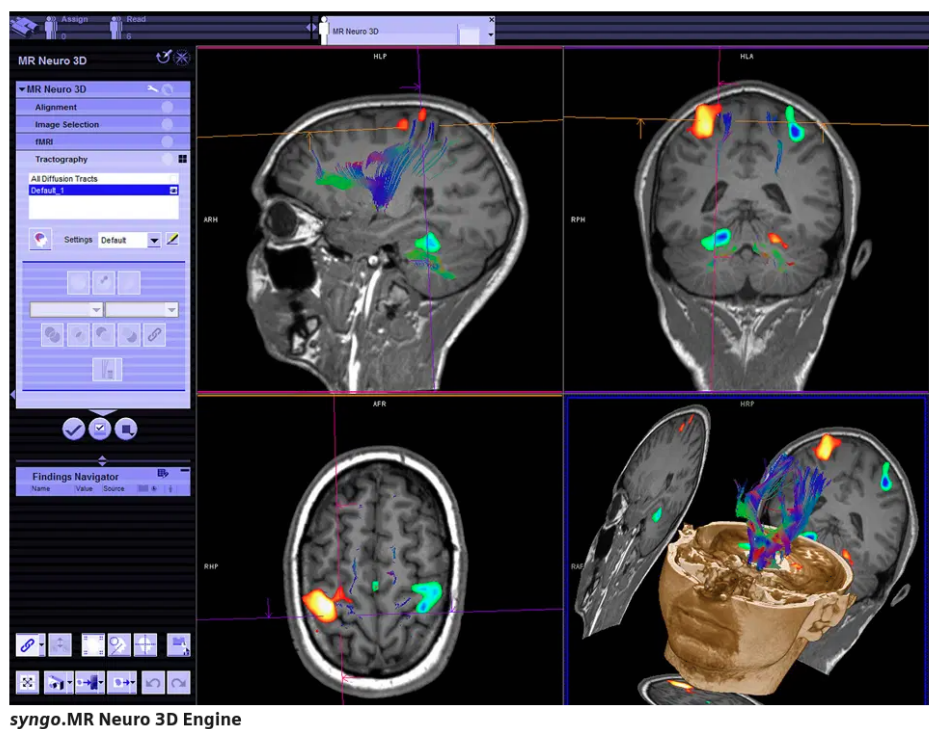


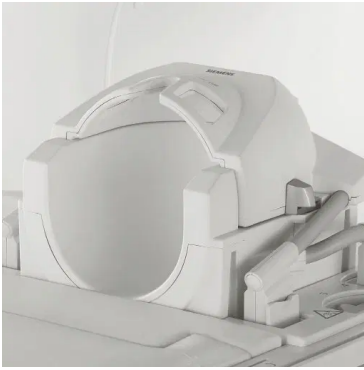
# Plateau technique

## .IRM clinique 3T Siemens Prisma

**Syngo MR XA30 : T1w, T2w, BOLD, Diffusion, ASL, Spectroscopie...**



**Antennes**



**Head 32ch (32 cannaux)**



**Head/Neck 64ch (64 cannaux)**



**Head/Neck 20ch (20 cannaux)**



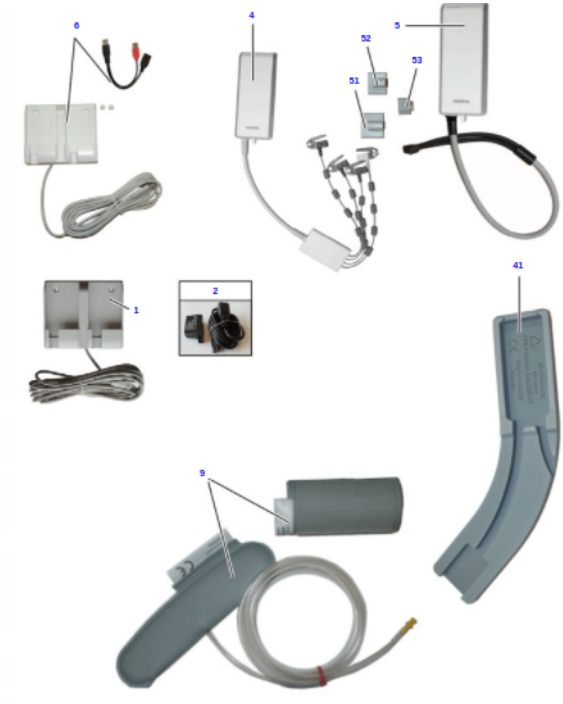
**3ch Body Coil**

**Flex Coil Interface**

**Hand/Wrist 16ch coil**

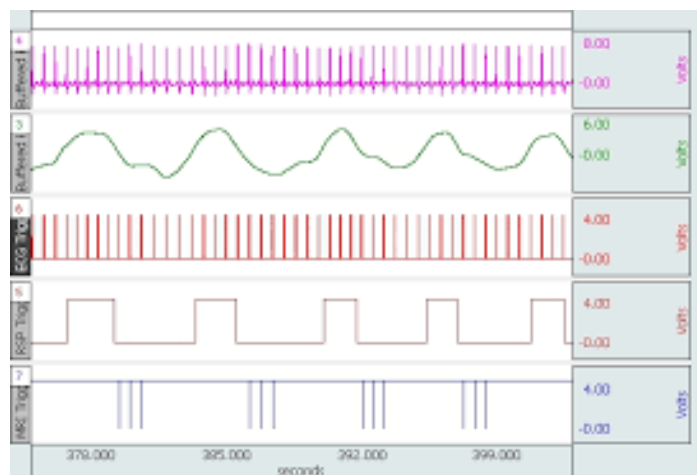
# Matériel IRM-compatibles

## Acquisition des données physiologiques



**PMU Siemens : Respiration, ECG, PPG**

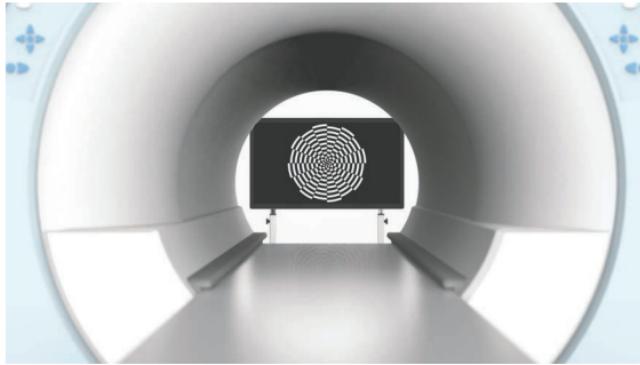
**(Système Biopac-AcqKnowledge MP160 également disponible : ECG, EDA, Respiration)**



**Écran 40" haute définition avec caméra intégrée  
(Nordic Neurolab)**

# InroomViewingDevice

For fMRI, patient comfort and instant feedback



## Specifications

Screen diagonal	40"
Pixels	3840 x 2160
Contrast	5000:1
Refresh ratio	60Hz @FHD 30Hz@UHD
Camera	1920x1080, 30fps, 1280x720@30fps
Video input	HDMI
Mounting interface	VESA (2 x 100 x 100, D: 400mm, M4)

## Multipurpose Usage

The 40" 4K UHD InroomViewingDevice was designed to provide an optimal MR compatible monitor that satisfies the needs of both clinical and advanced scientific applications.

## Integrated Camera

With its slim design, high definition display and superior image quality, the InroomViewingDevice is an optimal choice for an easy to use alternative to conventional projectors or goggle based image delivery systems. The innovative, front-facing camera provides an uninterrupted patient surveillance during examination. Thanks to the built-in USB hub, connecting patient communication and interface device is now extremely easy.

## Flexible Positioning

The low weight and height adjustable mobile foot stand allows easy positioning of the monitor anywhere in the MRI room. The monitor can also be ceiling mounted (through 3rd party).

## Instant Feedback

The monitor facilitates the examination process by allowing the operating personnel to remain inside the examination room during procedures, thus allowing uninterrupted patient care and quick response time, which significantly improves clinical workflow.



**Boutons réponse**



**Pyka 4 Button Handheld  
Response Grip**

**(Cambridge research)  
(NordicNeuroLab)**

**2 Button Bimanual**

**(Current Design)**



# .IRM préclinique 7T de MR Solutions

- Antennes : Mouse head coil, Mouse Body coil, Marmoset heat coil, Rat head coil
- Logiciels : Precinical Scan, Power scan.
- Matériel de monitoring et d'anesthésie : Minerve Veterinaire

## .Simulateur IRM

- MoTrak® Head Motion Tracking System

---

Révision #23

Créé 19 janvier 2022 18:14:59 par Mouni Amrane

Mis à jour 29 janvier 2024 11:04:13 par Daphnée Le Sage